



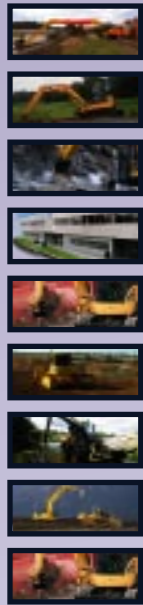
# KOMATSU

*Times*

MAKING TRACKS  
INTO THE FUTURE.

EDITION 02/2005

# IN THIS ISSUE



**04 PC340-7 SUPER-LONG REACH EXCAVATOR**

Komatsu helps rebuild a flood defence system in England

**06 PC50MR-2 EXCAVATOR IN GERMANY**

A real pro on the golf course

**07 TRUFFER AG IN SWITZERLAND**

Truffer AG purchases the biggest operating excavator in Switzerland from Komatsu

**08 DEDICATION, PRODUCTIVITY AND PROFESSIONALISM**

... the three pillars of the Komatsu Parts organisation in Europe

**10 THREE NEW MR SERIES EXCAVATORS LAUNCHED**

Expanded new zero tail swing mini-excavators

**11 IN THE IRON TRAINING**

Komatsu personnel train at a limestone quarry in France

**12 ROADSIDE CLEARING IN NORWAY**

Specially equipped WA250PT-5 wheel loader

**13 D155AX-5 BULLDOZER**

Komatsu dozer prepared championship ski slope in Italy

**14 KOMATSU DEMOLITION EXCAVATORS**

Komatsu's big guns help clear the site for the "Gunners" new home in London

## CREDITS :

Komatsu Times is the journal of Komatsu Europe International N.V., Belgium. Responsible editor is Y. Komamura, Mechelsesteenweg 586, 1800 Vilvoorde. This journal will be published on a quarterly basis. The views expressed in this journal are those of the contributors, and not necessarily those of Komatsu Europe International N.V. All rights reserved. No part of this journal may be reproduced, stored in a retrieval system, or transmitted in any form by any means, electronic, mechanical, photocopying, recording or otherwise, without prior written permission from Komatsu Europe International NV. Materials and specifications are subject to change without notice. Editorial board: Burt Baum, J.S. Blanc. Producer: Interfort nv. Translations: Brantra bvba. Printing : IPM printing. Contributing to this issue: Stephanie Baines, Tom Engebretsen, Fabrizio Forti, Ewen Gilchrist, Dirk Legrand, Ed Prosser, Steve Quintijn, Matthew Scott, Rainer Stitterich, Marc Blondeel

## KOMATSU EUROPE NATIONAL SALES & SERVICE NETWORK

Austria - Kuhn Baumaschinen GmbH & Co KG  
Tel. + 43 6225 82060

Belgium - BIA nv / sa  
Tel. + 32 2 689 28 11

Bulgaria - Kirov  
Tel. + 359 2 933 08

Croatia - Kuhn - Hrvatska d.o.o.  
Tel. + 385 1 240 7 522

Cyprus - Alexander Dimitriou & Sons Ltd.  
Tel. + 357 22 715 300

Czech Republic - Kuhn Bohemia a.s.  
Tel. + 420 2 96376 372

Denmark - K.F.D. A/S  
Tel. + 45 75 362233

Estonia - Balti Ehitusmasin - BALTEM  
Tel. + 372 6 060 481

Finland - Suomen Rakennuskone OY  
Tel. + 358 927 66050

France - Komatsu France S.A.  
Tel. + 33 1 30905100

Germany - Komatsu Deutschland GmbH  
Tel. + 49 511 45090

Greece - General Automotive Company S.A.  
Tel. + 30 210 348 3300

Hungary - Kuhn Kft.  
Tel. + 36 1 289 8080

Iceland - Kraftvelar EHF  
Tel. + 354 535 3500

Israel - A.E.L.  
Tel. + 972 88 69 9456

Italy - KIT Noventa  
Tel. + 39 0444 780411

Latvia - BCM - Baltijas Celtniecibas Masina Sia  
Tel. + 371 7 241 124

Lithuania - Baltijos Statybinės Masinos UAB - BSM  
Tel. + 370 698 12 736

Malta - Int. Machinery Ltd  
Tel. + 356 2123 2620

Morocco - Stokvis S.A.  
Tel. + 212 2261 8989

Netherlands (the) - BIA bv  
Tel. + 31 575 596 700

Northern Ireland - W.A.C. McCandless (Engineers) Ltd.  
Tel. + 44 28 9035 18 11

Norway - A/S Sigurd Hesselberg  
Tel. + 47 22 88 7200

Poland - Marubeni Construction Machinery Poland Sp.z.o.o.  
Tel. + 48 22 868 42 32

Portugal - Cimertex S.A.  
Tel. + 351 22 091 26 00

Republic of Ireland - McHale Plant Sales Ltd.  
Tel. + 353 613 79112

Romania - Marcom RMC '94 srl  
Tel. + 40 21 236 21 64/65/66/67

Serbia & Montenegro / Bosnia & Herzegovina / FYRO Macedonia } TEL.  
Tel. +381 11 3281 718

Slovakia - Kuhn Slovakia  
Tel. + 421 2 63838509

Slovenija - Kuhn d.o.o.  
Tel. + 386 1 562 2271

Spain - Komatsu España  
Tel. + 34918872600

Sweden - Swelog  
Tel. + 46 171 416 770

Switzerland - Kuhn Schweiz A.G.  
Tel. + 41 33 4398822

Tunisia - Dalmis S.A.R.L.  
Tel. + 216 71 432 888

U.K. - Marubeni Komatsu Ltd.  
Tel. + 44 1527 512512

KOMATSU WEB SITES  
www.komatsu.com  
www.komatsuEurope.com  
www.komatsu.de  
www.komatsu.it  
www.equipmentcentral.com/europe

# EDITORIAL

EDITION 02/2005



KOMATSU  
Times

*I have been asked by our CEO, Mr Sakane, to return to Japan and take up the new position of Senior Executive Officer, president of Construction & Mining Equipment Marketing Division, in Komatsu Ltd. as of April 1st, 2005.*

*At the same time, I was advised that the KLTD board of directors have nominated me as a director of the KLTD board.*

*As of 1 April 2005, my former position as Group CEO & Managing Director of Komatsu Europe International SA (KEISA), was succeeded by Mr T. Sakurai. I will continue to participate in KEISA's management as a non-executive member of the KEISA board of directors.*

*Although I am leaving Brussels, I will still be supporting our European & North African operations from Japan.*

*I am certain that the new group CEO and Managing Director, Mr Sakurai, will continue to support and further expand Komatsu's business here.*

*Once again, I thank you for the strong support that you have given to me. Good luck and best wishes!*

Yoshinori Komamura



*As the new Group CEO and Managing Director of Komatsu Europe International, I am very pleased to take over the position as the honorary editor of Komatsu Times magazine. From its first edition, back in the winter of 1999, Komatsu Times has been our way of updating Komatsu customers, dealers, distributors and personnel with information about our company, products and services in Europe.*

*I want to take this opportunity to thank Mr. Komamura for his vision to start this publication for the purpose of informing our European community concerning our total package of new products, services and activities. I look forward to keeping you informed about Komatsu in Europe.*

Tsutomu Sakurai

# PC340-7 SUPER-LONG REACH EXCAVATOR

— Komatsu helps rebuild a flood defence system in England —

by Matthew Scott

A super-long reach Komatsu PC340-7 excavator has been enlisted to help build an infrastructure that will regenerate and protect a river's flood defence embankment. H.E. Services, a multinational plant hire company that specialises in excavator hire, has been assisting the Environment Agency in this flood defence project in England's East Sussex County.

The project was undertaken by the Environment Agency's emergency workforce and specialist sub-contractor Cain Bio-Engineering. The works are being done to counteract the erosion of a flood defence embankment along the tidal section of the river Rother. The works at this site include re-profiling the existing riverbank, and the construction of a brushwood mattress over a length of approximately 120 metres. The mattress, designed by Cain Bio-Engineering, will act as a sediment trap. It will allow the embankment to

reform itself and maintain a stable profile.

This brushwood mattress is made up of approximately 2,500 hardwood posts that are interwoven with bundles of hazel wood twigs. The posts range from three to six metres in length. With post centres spaced every 75 centimetres, they're pushed into the tidal mud to a typical depth of two metres.

For these works, H.E. Services supplied a Komatsu Long Reach PC340LC excavator. This machine, with its 22-metre extra-long reach arm, enabled the work to be done from dry, stable land. This avoided the hazards that are associated with working in a tidal zone. In addition to supplying the Komatsu machine, the technical staff at H.E. Services built a dedicated clamp attachment that handled and positioned the hardwood posts.

Mrs Pam Durey, Director of H.E. Services said; "This was a

## PC340-7 LC SPECIFICATIONS

	standard model	super-long front
Engine (kW/HP)	180/242	180/242
Operating weight (kg)	32,960-33,910	41,100
Bucket capacity (m <sup>3</sup> )	0.6-2.4	0.4-0.6
Max reach (m)	9.95	22.0



challenging project which enabled us to demonstrate our capability to solve clients' problems and differentiate ourselves from other plant hire organisations. The Komatsu machine selected was more than capable of fulfilling the excavation task that was set. The problem that we had to solve was how to adapt the 22-metre boom to suit the positioning of the hardwood timbers. Our considerable experience in developing the Masterhitch enabled us to engineer a solution that met the Environment Agency's needs."

A spokesman for the Environment Agency has reported that, because of the success of the H.E. Services solution, the anticipated construction period was reduced by three weeks, and this resulted in savings of more than £10,000 (€ 14,450). Add these savings to the positive environmental impact of the project, and you have another Komatsu success story where everyone benefits.

UK company, H.E. Services (Plant Hire) Ltd., maintains two PC340LC super-long reach machines. The company's fleet also has 20 Komatsu 'Super Reach' excavators that have 15-metre reaches. The need for this type of machine was demonstrated when H.E. Services were called in to help off-load grain from a cargo ship that was sinking at its mooring. The dockside cranes were unable to reach low enough to excavate the grain. A 'long reach' Komatsu machine was able to unload the grain before it was spoiled by seawater.



The launch of the first PC340 super long front machine in 2003 took place at the HE Group headquarters in England. Mr Yoshinori Komamura, President and Managing Director of Komatsu Europe (left) and Mr Hugh Edeleanu, Group Chairman of HE Services (right), attended a demonstration of the first new super long front PC340 in action at the Medway River docks.

# PC50MR-2 EXCAVATOR IN GERMANY

— A real pro on the golf course —

by Rainer Stitterich

Heiko Schüch operates a Komatsu PC50MR-2 excavator. At the time of writing, his short tail PC50MR-2 was working on the grounds of the Spessart Golf Club, a highly demanding golf course for its degree of difficulty. The PC50MR-2 is an optimal choice for works on drainage areas, trenches, tee-off points and various other landscaping projects. This is because of its compact dimensions, plus its long reach. Although golf courses have beautiful landscapes, they are anything but clean operating environments for earthmoving machines. Komatsu MR-2 series mini excavators are ideal for these environments because their rounded-shape track frames prevent the accumulation of dirt under the engine and cab. Oliver Günther, who works at Komatsu's partner company Schlüter Baumaschinen GmbH said; "We recommended the PC50MR-2 because of the advantages of the rounded cast iron undercarriage". This excavator's electronic systems are also cleverly designed. Thanks to the machine's 'Closed Load Sensing

System', it has far superior levels of sensitivity for carrying out precise gardening and landscaping applications. In addition to this, operator Heiko Schüch especially enjoys the cab's large dimensions, plus the easy serviceability of the machine at the end of the day. The Spessart Golf Club, with nearly 900 members, is voluntarily participating in a project called "Obliged to the Environment". This is a German Golf Club Association project. The first golf club in Germany to participate, Spessart is subjected to demanding environmental criteria, with requirements to meet ISO 14001 (Certified Environmental Management System) requirements. These ambitious aims match Komatsu's environmental commitments. This PC50MR-2, is certainly a perfect match for the challenging demands of the Spessart Golf Club. This all-rounder is a real pro!



## PC50-MR2 SPECIFICATIONS

Operating weight (kg)	4,765 - 5,255
Bucket capacity (m³)	0.07 - 0.175
Net power @2,350 rpm	29.4 kW / 39,4 HP

# TRUFFER AG IN SWITZERLAND

— Truffer AG purchases the biggest operating excavator in Switzerland from Komatsu —

by Marco Zeni



during the hand-over of the keys for the new machine. The PC1250-7 is a very big one for Kuhn. The maxim of Günther Kuhn: "The person who has visions will gather success" perfectly suits the visions of Pius Truffer. Regarded in that way, this investment in the future should be paying off within a short time. At a blasting, and during the clearing of boulders that followed, the new excavator showed off its power. Seemingly without difficulties, the new excavator took out 30 tonnes of boulders in a very short time. Pius Truffer said; "for this reason, the excavator used at the Vals quarry is not only the "biggest", but also the "best"".

The biggest hydraulic excavator in Switzerland has been handed over to the company Truffer AG, in Vals, located in the mid-south of Switzerland not so far from the San Bernardino Pass. Not only the size is spectacular for this country. Also, the delivery of such a big excavator was quite an impressive operation, particularly during its trip through the steep, narrow roads towards the quarry at an altitude of 1200 metres above sea level. At a blasting and the clearing of boulders that followed, the excavator demonstrated its skills.

Why did it have to be the biggest? That's what we asked Pius Truffer, owner of the homonymous quarry. He knows many reasons for this large investment. "At first we have the technical side. Boulders up to 50 tonnes can be taken out of the quarry using this machine. This improves our productivity and competitiveness. In addition, it guarantees the production safety. Moving loads at these levels demands power reserves. Therefore, a standard excavation machine isn't big enough. Our employees are another important reason. This machine facilitates very hard work in a quarry and significantly represents an appeal for the recruitment of new employees." Furthermore, Truffer sees, in his visionary manner, a vibrancy for the entire Vals region. He thinks that this excavator should contribute to a strategy to advertise the Vals' quartzite and the region there. Günther Kuhn, Komatsu distributor for Switzerland, remained at the wheel and participated



# DEDICATION, PRODUCTIVITY AND PROFESSIONALISM...



...the three pillars of the Komatsu Parts organisation in Europe.

by Steve Quintijn

Komatsu people have a strong dedication to customer service, with one common goal: customer satisfaction. In each country, every service mechanic makes the same personal commitment: to maintain your machine at its top performance levels. And every customer service agent is committed to keeping you informed about the parts that you need to get optimal performance from your machine.

In addition to these peoples' positive influence, over the past decade, we have made massive investments in our parts warehousing, management and delivery systems.

With each step that we take, we keep you, our customer, in mind. We always consider what would be the best solution to serve you in the most optimal way... now, and for many years to come.

Based on our goal of consistently delivering optimal customer service, we have accomplished a major merger of our three European warehouses. They have been consolidated into a single, central warehouse in Belgium. As a result, larger inventories and greater availability make it possible for us to deliver your parts even faster than we have in the past.

All of these factors add up to ensuring that you get the greatest reliability and productivity from your Komatsu machine, day-after-day, year-after-year.



## Our new parts facility - some key facts and figures

- A large-scale distribution facility with state-of-the-art logistics and an IT support system.
- A 34,500 m<sup>2</sup> parts distribution centre near Brussels airport.
- 4,750,000 pieces in stock.
- 10 fully-automated shuttle towers that store 115,000 smaller parts.

**Genuine parts:** Your machine's optimum productivity can only be ensured by genuine Komatsu parts... maintained in large quantities for you in our warehouse.

**Professionalism:** Our expert associates, state-of-the-art warehouse shuttle system, and three daily warehouse work shifts set the standards... and the pace. Professionalism drives every aspect of these operations.

**Transport:** Our transport partner works directly with us, in-house, ensuring the best solutions to get your parts to your required destination, on time.

EMEA coverage: Our centralised parts facility serves customers across all of Europe, the Middle East and Africa... a total of 60 countries.



# THREE NEW MR SERIES EXCAVATORS LAUNCHED



— Expanded new zero tail swing mini-excavators —

by Fabrizio Forti

At the Samoter '05 trade fair in Verona, Italy, Komatsu presented a European preview of three new zero tail swing mini-excavators in the 1.5 to 3 tonne weight class: the PC18MR-2, PC20MR-2 and PC27MR-2. These extend Komatsu's range of zero-tail swing machines, together with the well-known and highly respected models PC30MR-2, PC35MR-2 and PC50MR-2. These new machines are based on the same design for performance, comfort and ease of maintenance. Their 'zero-tail swing' radius makes work in restricted areas very safe, precisely where conventional models face severe restrictions. But this characteristic doesn't take away their stability or lifting capacity.

The new machines are especially adept for gardening, road maintenance and small demolition jobs, to mention just a few applications. And where the width of the machine becomes critical, the PC18MR-2, with standard variable undercarriage, becomes the ideal solution, thanks to its 980 mm overall width.

All models feature the well-known closed centre with Load Sensing CLSS hydraulic system. This system ensures that all movements (even simultaneous ones) are fast, precise and independent from the load and engine rpms.

Because productivity is not only related to performance, Komatsu designed these mini-excavators, around the peo-

ple who actually use them. Despite their compactness, they have extremely spacious cabs. This results in a comfortable work environment for every size of operator. Also, the sliding door offers easy accessibility to the cab, and its functionality is ensured even when working close to obstacles. This is something completely missing in traditional side-hinged doors.

Komatsu has also paid special attention to machine maintenance. Periodic checks can be easily performed by opening the bonnets. And for extraordinary operations, the tilting cab ensures maximum accessibility to all main components.



## KOMATSU'S EXPANDED SHORT TAIL SWING MINI EXCAVATORS OFFERING (NEW MODELS IN BOLD)

Model	Net power kW/HP	Weight kg	Max. digging depth mm	Bucket capacity m <sup>3</sup>
PC18MR-2	11,2 / 15 @2 600	1 820	2 410	SAE 0,044 / CECE 0,035
PC20MR-2	15,5 / 21 @2 500	2 355	2 750	SAE 0,07 / CECE 0,06
<b>PC27MR-2</b>	<b>19 / 25,5 @2 600</b>	<b>3 165</b>	<b>2 900</b>	<b>SAE 0,075 / CECE 0,065</b>
PC30MR-2	20,6 / 27,6 @ 2 500	3 355	3 280	SAE 0,09 / CECE 0,08
PC35MR-2	21,7 / 29,1 @ 2 400	3 915	3 510	SAE 0,11 / CECE 0,10
PC50MR-2	29,4 / 39,4 @ 2 350	5 190	4 160	SAE 0,16 / CECE 0,14



# 'IN THE IRON' TRAINING'

— Komatsu personnel train at a limestone quarry in France —

by Ewen Gilchrist

For the first time ever, and as part of its annual Large Machine Training programme, Komatsu Europe provided an 'in the iron' training session at the 'Carrière de Jaumont', near Metz, in northeast France.

Over a two-day period, 55 Komatsu Sales Managers from 22 European countries divided into two separate groups and received training on the new range of Komatsu articulated dump trucks and bulldozers. During the sessions, they drove the Komatsu machines, as well as main competitors' machines - all at the same job site. The purpose of this training was twofold: (1) To increase the first-hand machine knowledge of Komatsu's European Sales Personnel (2) Determine how to advise customers on the machines and attachments that best suit their needs.

All participants agreed that this type of 'hands on' training gave them the most knowledgeable perspective of the Komatsu machines and how they were positioned in the market.

The customer that provided the site and facilities for Komatsu to host this event was the company Vaglio S.A., 'Carrière de Jaumont'. They have been using Komatsu machines at this limestone quarry since 1996. They have fourteen Komatsu machines at this site: HM400 articulated

dump trucks, a D65 bulldozer, excavators ranging from a 21-tonne PC210 to three 75-tonne PC750s, and five large class wheel loaders; four WA500s and a WA600.

Events like this show Komatsu's commitment to educate the people who support Komatsu's local Sales and Service Organizations. This ensures that they are up-to-date and knowledgeable in helping our customers determine the optimal solutions for their operations.



The participants extend their sincere thanks to Mr Robert Vaglio, who so very kindly let them use his quarry for this training.



# ROADSIDE CLEARING IN NORWAY

— Specially equipped WA250PT-5 wheel loader —

by Tom Engebretsen

A Komatsu WA250PT-5 parallel lift tool carrier has been outfitted by Hesselberg Maskin, Komatsu's distributor for Norway, with special equipment for cutting grass and clearing bushes on roadsides.

A low travel speed plus plenty of available hydraulic pressure are vital in the performance of a tool carrier such as this. The features that make Komatsu's WA250PT-5 so effective are that it's fitted with an electronically controlled variable two pump motor system for the hydraulics, and that the machine was designed and purpose-built to be a tool carrier. The standard model of this machine is built with three hydraulic services. Hesselberg has added a fourth. The standard model WA250PT-5 also has a "creep function". This allows it to travel at 5 km/h whilst delivering full hydraulic oil flow to the tool hydraulics circuit. The Hessel-

berg Maskin engineers have managed to get this machine to travel as slowly as just 1 km/h, with full hydraulic power still available for the tools.

The machine is also fitted with a hydraulic cooling fan, which has been made reversible. This can be used to blow out grass, twigs and plant cuttings that have become compacted when the machine is used for roadside clearing. The cutter itself is fitted onto a moveable arm. This arm can swing from the front, across to the right-hand side of the machine. The range is extremely good, and the tool can be tilted both forwards and sideways.

Overall, the machine would be somewhat too large for use on small pedestrian walkways and paths. But as a roadside tool for use on local, regional or national roads, this Komatsu machine is both effective and efficient.

A special joystick was installed to manage the extra equipment.



## WA250PT-5 SPECIFICATIONS

Engine	101kW / 135HP
Operating weight	13,800kg
Max tipping load	7,200kg
Dumping height	2,885mm
Dumping reach	1,085mm



All that's left behind the machine is the cleared land with newly cut grass and other felled vegetation.



# D155AX-5 BULLDOZER

— Komatsu dozer prepared championship ski slope in Italy —

by Dirk Legrand



It was 1985 when the last Alpine Ski World Championships were held in Bormio, Alta Valtellina. Now, after twenty years, this prestigious international event returned to Bormio and Santa Caterina. Over the past two decades this ski slope and its surrounding amenities have been developed to make it one of the most excellent and attractive in the north of Italy.

A company that has contributed to this transformation is Cusin Edil. They specialise in the preparation of ski runs and ski lift installations. They have selected a Komatsu D155AX-5 bulldozer to carry out ground works and levelling, optimising their operations at this site.

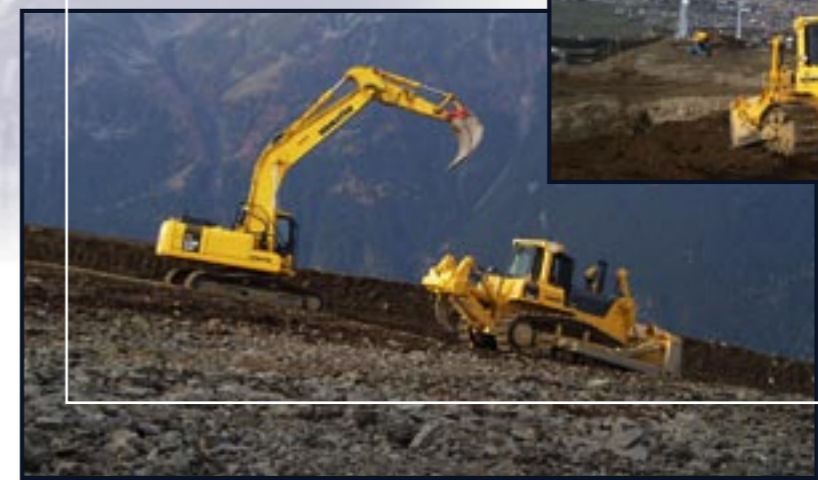
Mr Cusini, owner of Cusin Edil said: "Initially, we considered acquiring an even larger Komatsu model. But then, we saw the D155AX-5 with a Semi-U blade and a capacity of 9 cubic metres. As it turned out, this model matched our requirements and offered the ideal combination of versatility and performance. This allows us to use it in all seasons, and not just for preparing ski runs during the summer and autumn. This D155AX-5, together with a fleet of Komatsu crawler excavators, has been used in recent months to realise the development of the Valbella-Bormio 3000 chair-lift (from 2527 to 3011 metres above sea level) plus the accompanying departure and arrival stations."

The D155AX-5 is one of the core machines in Komatsu's European offering of bulldozers. It's considered as one of the industry's champions, based on its combination of design, rugged construction and performance. It's only fitting that a champion on tracks would be used to prepare the way for champions on skis.



## D155AX-5 SPECIFICATIONS

Net horsepower	231kW/310HP @ 1,900rpm
Operating weight	39,010kg
Blade capacity	Semi-U 8.8m³ Full-U: 11.8m³



# KOMATSU DEMOLITION EXCAVATORS

— Komatsu's big guns help clear the site for the "Gunners" new home in London —

Keltbray, the UK-based demolition-to-construction contractor group, used their extensive range of Komatsu excavators when they were awarded the £6 million (€ 8.6 million) contract to clear the Ashburton Grove site which is to be the new north London home of Arsenal Football Club. The Emirates stadium is to be completed in time for the kick-off of the 2006/7 football season. At a cost of £357 million (€ 514 million), it will seat 60,000 fans.

The challenge for Keltbray was to clear the 60-acre site by demolishing the existing buildings and levelling the land, which varied in elevation by up to 3.5 metres. With a fast track programme in front of them, Keltbray brought their first team of Komatsu excavators into play. While a 45-tonne PC450 excavator was loading the broken up pieces of reinforced concrete into dump trucks, 21-tonne PC 210 excavators were waiting on the far side of the site to load the dumped concrete into crushers at the site. The crushed concrete was then used at the site for piling mats.

by Ed Prosser

Meanwhile, a 60-tonne PC 600 excavator was used to dig out the required levels of soil. More than 100,000 cubic metres of heavy clay-based soil had to be removed. It took only 3.5 passes with the PC 600's bucket to fill each dump truck. At the height of the project, 140 trucks per day were leaving the site for the trip to the landfill location.

Paul Deacy, the Keltbray Site Director summed up the key role of the PC 600 "With the demands of the fast track programme we needed the power and breakout force of the Komatsu PC 600 excavator to lift the heavy clay soil and to load the material as fast as possible to keep the trucks moving within the planned timings."



Arsenal manager Arsene Wenger visits the new stadium site



## STADIUM DATA (REPRINTED FROM ARSENAL'S WEB SITE)

- At the project's peak, 1,000 construction workers will be working on the new stadium.
- The site of the new stadium is 17 acres.
- The height of the new stadium will be 46 metres from ground level to its highest point.
- Over 2,500 legal documents have been signed in order to give the project full clearance.
- There will be 41 TV camera positions throughout the stadium, as well as 215 seats for the media.
- Over 25,000 cubic metres of contamination has been removed from all the sites, to make way for the project.
- Size of the grass area will be 113m by 76m.
- Over 60,000 cubic metres of concrete will be used in the structure.
- 10,000 tons of steel reinforcement will be used in the stadium.
- 3,000 tons of tubular steel will be in the main roof (there are 100 tons in the existing North Bank).
- There will be 33,000 metres of concrete terracing.
- The new stadium will house 15,000m<sup>2</sup> of glazing, the equivalent area of two football pitches.
- There will be 4,500 metres of metal hand railing.
- The stadium complex will contain 2,000 doors.
- There will be 100 flights of stairs. Also there will be 13 elevators and 5 escalators.
- The four tiers of seating will all be covered by a roof of approximately 30,000m<sup>2</sup> (Football pitch covers approx 8,600m<sup>2</sup>).



## OUR NIGHT-SHIFT ENSURES YOUR DAY-SHIFT

**24 HOURS  
SERVICE**

Komatsu Europe International n.v.  
Mechelsesteenweg 586 - B-1800 Vilvoorde - Belgium  
Tel.: +32 2 255 24 11 - Fax: +32 2 252 19 81  
[www.KomatsuEurope.com](http://www.KomatsuEurope.com)

Your productivity is our top priority. Our massive network of suppliers, expeditors, customer service personnel, distributors and freight carriers helps guarantee your continuing operating efficiency. Working together like parts of a fine-tuned machine, we all play a vital role in the timely delivery of your Komatsu order. We're dedicated, we're committed, and we're always there for you when you need us. We only use the best, because your productivity is the key to ensuring our long-term partnership with you.

**KOMATSU**  
TAKE THE LEAD