

# KOMATSU

# TIMES

# Times



Quarterly News Magazine for Construction Equipment Users — Volume 6 N°2

**Mining shovel**  
site test

**Railway works**  
in England

**Expert driver**  
interview

**VHMS**  
Vehicle Health  
Monitoring System



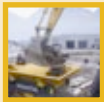
# IN THIS ISSUE



**CUSTOMER PROFILE**  
the Nordkalk limestone quarry in Sweden .....page 4



**EXPERT DRIVER**  
an interview with Michael Flamme, demonstration machine driver in Germany .....page 6



**NEW MOBILE CRUSHER**  
the first new Komatsu BR380JG goes to work in Italy .....page 8



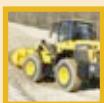
**NEW MINING SHOVEL TEST**  
a new European-made PC750 is intensively tested in Germany .....page 10



**RAIL-OUTFITTED SHORT TAIL EXCAVATORS**  
a fleet of railway excavators go to work in England .....page 12



**VEHICLE HEALTH MONITORING SYSTEM**  
a leading-edge development in machine diagnostics .....page 14



**NEW PRODUCT PROFILE**  
introducing the new WA500-5 wheel loaders for earthmoving and material handling.....page 15



## CREDITS

Komatsu Times is the journal of Komatsu Europe International N.V., Belgium. Responsible editor is Y. Komamura, Mechelsesteenweg 586, 1800 Vilvoorde. This journal will be published on a quarterly basis. The views expressed in this journal are those of the contributors, and not necessarily those of Komatsu Europe International N.V. All rights reserved. No part of this journal may be reproduced, stored in a retrieval system, or transmitted in any form by any means, electronic, mechanical, photocopying, recording or otherwise, without prior written permission from Komatsu Europe International NV.

Materials and specifications are subject to change without notice.

Editorial board: Burt Baum, Sevil Bas  
Producer: Interfot nv  
Translations: Brantra bvba  
Printing : Rosseels Printing Company  
Contributing to this issue: Dirk Billen, Marc Blondeel, Michael Flamme, Koji Ito, Dirk Legrand, Marco Maschke, Ed Prosser, Simon Saunders.

## KOMATSU EUROPE NATIONAL SALES & SERVICE NETWORK

Austria - Kuhn Baumaschinen GmbH & Co KG  
Tel. + 43 6225 82060

Belgium - Doornbos België B.V.B.A.  
Tel. + 32 15 270370

Bulgaria - Balkan Star  
Tel. + 359 2 91988

Croatia - Kuhn - Hrvatska d.o.o.  
Tel. + 385 1 240 7 522

Cyprus - Alexander Dimitriou & Sons Ltd.  
Tel. + 357 22 715 300

Czech Republic - Kuhn Bohemia a.s.  
Tel. + 420 2 96376 372

Denmark - K.F.D. A/S  
Tel. + 45 75 362233

Estonia - Balti Ehitusmasin AS  
Tel. + 372 6 060 480

Finland - Suomen Rakennuskone OY  
Tel. + 358 927 66050

France - Komatsu France S.A.  
Tel. + 33 1 30905100

Germany - Komatsu Deutschland GmbH  
Tel. + 49 511 45090

Greece - General Automotive Company S.A.  
Tel. + 30 210 348 3300

Hungary - Kuhn Kft.  
Tel. + 36 1 289 8080

Iceland - Kraftvelar EHF  
Tel. + 354 535 3500

Israel - A.E.L.  
Tel. + 972 88 69 9456

Italy - KIT Noventa  
Tel. + 39 0444 780411

Latvia - BCM - Baltijas Celtniecibas Masina SIA  
Tel. + 371 7 241 124

Lithuania - Baltijos Statybinës  
Tel. + 370 9812 736

Morocco - Stokvis S.A.  
Tel. + 212 2261 8989

Netherlands (the) - Doornbos B&N  
Tel. + 31 10 2988 001

Northern Ireland - W.A.C. McCandless (Engineers) Ltd.  
Tel. + 44 28 9035 18 11

Norway - A/S Sigurd Hesselberg  
Tel. + 47 22 88 7200

Poland - Marubeni Construction Machinery Poland Sp.z.o.o.  
Tel. + 48 22 868 42 32

Portugal - Cimertex S.A.  
Tel. + 351 2250 74500

Republic of Ireland - McHale Plant Sales Ltd.  
Tel. + 353 613 791 12

Romania - Marcom RMC '94 srl  
Tel. + 40 21 236 21 64/65/66/67

Slovakia - Kuhn Slovakia  
Tel. + 421 2 63838509

Slovenija - Kuhn d.o.o.  
Tel. + 386 1 562 2271

Spain - Komatsu España  
Tel. + 34918872600

Sweden - S.M.A. Construction AB  
Tel. + 46 8 56222500

Switzerland - Kuhn Schweiz A.G.  
Tel. + 41 33 4398822

Tunisia - Dalmis S.A.R.L.  
Tel. + 216 71 432 888

U.K. - Marubeni Komatsu Ltd.  
Tel. + 44 1527 512512

Yugoslavia - T.E.I.  
Tel. +381 11 3281 718

## KOMATSU WEB SITES

www.Komatsu.com  
www.KomatsuEurope.com  
www.Komatsu.de  
www.Komatsu.it

www.equipmentcentral.com/europe

*2003* was a year in which we began to see a market recovery that is certain to positively impact you, as well as us. I am pleased to share the news that our industry is now showing signs of recovery from downward trends that began at the end of 1999.

Decreases in the demand for both construction and utility equipment in Europe began in the year 2000, bottoming out in the final quarter of 2002. Since then, a steady climb has been seen, indicating a trend towards a market recovery. The latest data and market indications are that our market has stabilised and that marginal growth will be seen through the end of the year 2005.

In spite of these market fluctuations, Komatsu's consolidated European equipment sales, across all product lines, has remained reasonably steady over the past few years. We believe that this is a result of the high degree of market acceptance of the dozens of new and innovative machines that we have introduced during this period. Market sizes and trends certainly impact sales, but we believe that the real factors that drive our organization's success are the initiatives to make our machines and services better, including the way that they are delivered to our customers.

A company's commitment and strength is always most apparent at times when market economies diminish. Our steady sales, development and introduction of new European machines, and consolidation and expansion of customer support over the past three years all add up to show our total commitment to Europe and its people. And now that market trends are improving, we're positioned even better to give you the machines and services that you need to prosper and grow your business.



A handwritten signature in black ink, appearing to read 'Y. Komamura', written in a cursive style.

**Yoshinori Komamura**  
**President & Managing Director**

## [ Customer Profile ]

# Nordkalk

— Fleet of Komatsu machinery sets to work at the Nordkalk limestone quarry —

— by Dirk Billen —

**N**ordkalk Corporation, headquartered in Pargas, Finland, is the leading producer of high-quality, limestone-based products in northern Europe. The products are used in the steel, pulp and paper industries, as well as in environmental conservation and agriculture.

The story of Nordkalk began in 1898 at the Pargas limestone quarry in Finland, the product of which was burned and sold to paper mills, ironworks and pulp factories. By 1910, Nordkalk started operations in Lappeenranta, currently its biggest location in Finland, and grew internationally through several acquisitions. Until early 2003, Nordkalk was a wholly

owned subsidiary of the Partek Group, but is currently owned by NK-Holding Oy Ab, a Finnish investor group.

The company employs roughly 1,300 people and had a 252 million euro turnover in 2002. It boasts 36 locations in eight countries, specifically: Finland, Sweden, Norway, Poland, Estonia, Lithuania, Germany and Russia. A deposit of limestone in Storungs on Gotland Island in Sweden, the largest deposit in the Nordic countries, was incorporated into Nordkalk's operations in the early 1980s. Gotland Island is situated in the centre of the Baltic Sea, and is Sweden's largest rural municipality with roughly 60,000 inhabitants. On this island,

in Storungs, lies the largest limestone quarry in Scandinavia, which is owned by Nordkalk. The limestone on the island is shipped from there to several destinations around the Baltic Sea.

The Storungs quarry is an open pit quarry where well-defined and selected limestone rocks are blasted to provide limestone that has the ideal chemical and physical characteristics for use in kilns. The blasted rocks are loaded on dump trucks by hydraulic excavators and wheel loaders, and hauled to a crushing plant to provide the right-sized stones to feed the kiln. By heating limestone (calcium carbonate) to a temperature over 900°C (1,652°F) in a vertical kiln, the





*HD605-5, HD465-5, PC1100SP-6  
and WA380-5 in operation*



*HD465-5 and HD605-5  
at the Storungs quarry*



*PC1100SP-6 excavator loading  
blasted limestone onto HD465-5*

limestone is transformed into quick lime (calcium oxide) and carbon dioxide. After crushing and screening, the quick lime is ready for transport to customers.

Nordkalk's quarry at Storungs has been operating with a Komatsu fleet since 1994. The actual Komatsu equipment used comprises: a WA380-5, a WA470-3 and two WA700-1 wheel loaders; a PC300-3, a PC1000-1 and a PC1100SP-6 hydraulic excavator; a HD605-5 and four HD465-5 dump trucks; a WB97S-2 backhoe loader; and a SK07J-2 skid steer loader.

In 2003, Nordkalk updated their Storungs machinery and ordered two

HD605-7 dump trucks, a PC1250-7 hydraulic excavator and a WA700-3 wheel loader. With the new fleet, their plan is to increase their production base to 4.5 million tonnes (4.9 U.S. tons) per year at Storungs. Nordkalk is also making use of Komatsu machines at other locations in various countries.

All of the Komatsu machines at the Storungs quarry are operating with a full repair and maintenance contract and availability guarantee that ensures Nordkalk's production at a fixed cost. Komatsu's distributor for Sweden, SMA Construction AB (SMAC), provides all on-site backup,

including component and parts inventories as well as full-time repair and maintenance personnel to look after the equipment.

Several times each year, SMAC's managers and Nordkalk management at Storungs hold meetings to discuss operations. Product engineers at SMAC and Komatsu have a close working relationship with the Nordkalk Storungs operation to guarantee the best service and fully understand their needs.



*WA700-1 loading crushed limestone*



# expert driver *Michael Flamme*

— by Marc Blondeel —

**M**ichael Flamme works for Komatsu's German distribution facility. He demonstrates Komatsu machines for customers at private product demonstrations and at major trade fairs across Europe. He also assists and advises Komatsu's product engineers by testing new, large-class and special application machine prototypes in actual field tests. And he takes competitors' machines through their paces, comparing their performance to help ensure Komatsu's top competitive positioning in European markets. We interviewed him regarding his background, his job and some of his experiences as an expert driver, working for Komatsu.

**Q. What range of machines do you demonstrate?**

*A. All machines, except utility machines.*

**Q. How did you become employed with Komatsu?**

*A. I rented a Komatsu PC210-3 excavator. I was really impressed with its stability and the fact that it was leakage-free. In fact, I was so impressed with the machine that I contacted Komatsu and*

*asked if they had any job openings for drivers. The rest is history.*

**Q. How much of your time is spent demonstrating?**

*A. Demonstrating takes up about 30-40% of my time. The rest of the time, I'm involved in field evaluation of new large-class machines, supporting our field salesmen, and providing customers with application support.*

**Q. Do you train new operators when you're not demonstrating?**

*A. Part of the time, yes... especially operating quarrying machines.*

**Q. Do you ever get stage fright?**

*A. Never.*

**Q. How long does it take you to get to really know a new machine?**

*A. It only takes a few hours to get used to a new machine. It's really just a matter of getting used to new features and taking it to its limits.*

**Q. What was your most embarrassing demonstrating moment?**

*A. My most embarrassing moment was when I was demonstrating a HA250*

*articulated dump truck for a customer. I was taking it through its paces in an environment that was a virtual mud bath when the clutch broke down. I had to abandon the truck jumping into the mud in front of the customer.*

**Q. Have you ever tipped a machine over when pushing it to the limit?**

*A. No, not yet.*

**Q. Do you look after the operator's routine maintenance on your demo machines?**

*A. No it's not practical for me to do this. We have a workshop with a crew of technicians that are dedicated to doing this. After each demonstration, every machine is thoroughly checked and cleaned.*

**Q. Do your demo machines require more service because you're pushing them to the limit?**

*A. Off the line, Komatsu machines are designed to be pushed to the limit without any mechanical damage. The only extra service that's needed is cosmetic... cleaning and a bit of paint retouching.*



## [ Expert Driver Michael Flamme ]

*At trade fairs, Michael sometimes takes the microphone and tells audiences about the machines as another driver takes them through their paces.*



**Q. Do you practice or experiment when you're not demonstrating?**

*A. Experimenting yes. This is mostly done pushing mostly wheel loaders to their limits, handling a range of weights while our product engineers measure the results.*

**Q. Who is the most important person that you know of that has been in your audience?**

*A. Everyone in each of my audiences is important. The most famous celebrity that I know of was Gerhard Schroeder during the ground-breaking ceremony at Expo 2000 in Hanover.*



*Knowing the limits of the machine and having a great sense of balance are definitely assets*



# Mobile Crusher

[ First new BR380JG  
goes to work in Italy ]



— by Dirk Legrand —

**T**he company T.M.G. Scavi S.r.l., in the mountainous area of Berbenno di Valtellina Sondrio, Italy has taken delivery of the first new Komatsu BR380JG mobile crusher in Europe. The management at T.M.G. looked for a mobile jaw crusher that they could use for two specific applications: crushing granite stone, and crushing demolition debris.

One of the BR380JG's main applications is crushing granite stone at the job site from a riverbed to make aggregates for construction works. The main advantage of the BR380JG for T.M.G. for this function is economy. The high cost of transporting materials in the mountains has been eliminated because the aggregates are now made on location at the site.

The BR380JG's second application is the crushing of debris from demolition works. The finished product is delivered in a wide range of base materials that can be used for building foundations, roads and civil construction. Because T.M.G. has a large area where the debris can be stocked, there is no need to have the crusher continuously at this site. Having it there from time to time, as required, is sufficient. This allows T.M.G. to crush demolition debris whenever the BR380JG is not needed at any other sites to crush first class aggregates.

Based on this usage, the BR380JG was a perfect investment to provide a broader range of equipment that helps T.M.G. to expand into new businesses such as demolition and the on-site production of aggregates.

One of the main reasons that T.M.G. chose the BR380JG of Komatsu was their favourable experience with more than twenty other Komatsu machines, mostly excavators ranging from a 1.5-ton PC15R-8, up to five 34-ton PC340s. In addition to T.M.G.'s confidence in the quality of Komatsu products, the BR380JG offered additional advantages, when compared to competitors' machines: the ease of crusher setting and high performance, combined with a fully automatic crushing process.

All of these machines were delivered and are fully serviced by the local dealer Mainetti, in association with Pancotti, one of the most important dealers in Italy.

During the first days of production, Mr Trivella Guglielmo, manager of T.G.M., was impressed by the BR380JG. He said, "The BR380JG is an excellent performing silent crusher that will pay off in a short time with its high production levels and low cost".

The new BR380JG offers significant improvements over the proven model

BR350JG that it has now replaced, based on its extra added value in performance and machine control functions.

It has one of the largest treatment capacities in its class: 50 to 240 tons per hour, depending upon the material that is being crushed. It is equipped with Komatsu's original bear lock cylinder mechanism that allows the operator to change the discharge clearance with a simple one-touch adjustment. This also facilitates the removal of clogged foreign material from the discharge side.

Its fully electronic controlled hydraulic drive system allows it to automatically start up all work functions in the correct sequence – a real convenience and time-saver. Hydraulic steering and a high travel speed make it easy to relocate the machine, and the undercarriage is the same as used on Komatsu's hydraulic excavators, assisting parts availability and servicing convenience.

While this machine is hard at work in Italy, more will follow. They will be in every area where customers look for high crushing capacity, easy operations and maintenance, and mobility.

— by Michael Flamme —

# PC750 shovel

## [ Proof of performance in Germany ]



**K**omatsu recently moved the production of its 80-tonne PC750SE-6 Loading Shovel from Japan, to Komatsu UK, its excavator manufacturing facility in the north of England. This factory had already been manufacturing PC750 excavators in a backhoe configuration in recent years.

An essential step before introduction of every new Komatsu model is a comprehensive test of the first machine produced. This is done whether it's a completely new model, or a proven model that is being built in one of the Komatsu factories for the first time. The UK plant and its surrounding countryside did not have the physical conditions needed to carry out all of the tests to Komatsu's demanding standards. Therefore, this loading shovel was disassembled for transport, shipped to a German quarry, and reassembled for testing. Its performance was then evaluated and verified under actual working conditions.

Komatsu customer Mitteldeutsche Hartstein-Industrie AG (MHI) in Hanau, Germany agreed to test the machine in their Winterberg-Hildfeld dolerite quarry. About 500,000 tonnes of material are quarried and processed

each year at this site. The rock is used to produce frost protective coatings and stone chips for track gravel. The managing director of this MHI plant, and other quarries, is Dr.-Ing. Jürgen Aretz.

MHI was chosen because they had plenty of experience with Komatsu machines, and because the local Komatsu dealer "Schlüter für Baumaschinen" is a specialist in mining equipment. Schlüter managed the local machine assembly and adjustments. The company maintains a close relationship with MHI, providing machines, services and full service contracts

A single base machine is used to build both the loading shovel and backhoe versions of the PC750-6. There are slight differences in the hydraulics because of different functions between backhoe and loading shovel applications. Fixed raised cabs at



*Komatsu dealer Schlüter Baumaschinen from Erwitte, a specialist in large machines, went on the search for a suitable test quarry.*

**Successful tests: Loading dumpers in four loading cycles**

*The successful tests of the new 80 ton Komatsu PC750SE-6 started September 2003.*



various heights are available. A 1200 mm elevation was used in this test machine to provide a suitable view into the dump truck body during loading. The machine was configured with 610 mm double grouser shoes. This made an excellent contribution to the stability of the 80-tonne machine in this quarry application. In its standard version, the PC750SE-6 Loading Shovel includes central lubrication, boom and arm cylinder protection, an electronic engine diagnostic system, load-sensing hydraulics for combined movements, and hydraulic track adjusters. The cab is equipped with FOPS guard as well as a complete front guard.

Design engineers from the Komatsu plant in England planned and performed the quarry test. Strain gauges were glued onto sensitive areas such as edges and welds to measure material elongation. Peak force values were documented by computers.

At this test site, the PC750 loaded blasted stone into 40-tonne Komatsu HD405-6 dump trucks. With its 5,1 cubic metre shovel and 331 kW low-emission Tier II engine, it took the PC750SE-6 Loading Shovel just four cycles to load a 40-tonne truck. The machine delivered rapid movements and high performance with low fuel consumption. All measurements showed excellent results and confirmed that the design was correct. Following some fine-tuning, manufacturing of this model has now begun in the UK.

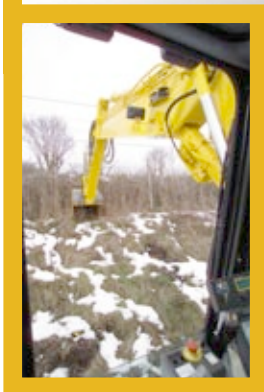
This way of testing certainly shows one of the reasons that Komatsu machines have a reputation for reliability. Each machine has to sustain plenty of tests, wherever Komatsu finds the best test location, before mass production begins.

*The PC750SE-6 loading dolomite crushed with the drop ball. This 80-tonne excavator is equipped with a 5.1 m shovel.*

*Loading a dump truck in four cycles. The new shovel with the 331 kW engine is one of the most advanced machines in its class.*

— Introducing  
Komatsu's new European-built  
Loading Shovel —  
**PC750  
shovel**





## [ Komatsu excavators take to the rails in England ]

— by Ed Prosser and Simon Saunders —

**D**ifficulties involved in transporting and operating crawler excavators onto rail jobsites in the UK have led to a predominance of wheeled machines being converted to road/rail use. Unfortunately, wheeled machines cause damage to rail ballast, because of the high ground pressure of the tyres. So there is a demand for an excavator with the low ground pressure of a crawler machine, and the easy access of a wheeled machine. Komatsu UK has answered this demand with the development of the PC128US Rail Machine.

The “US” in the model number designates the machine’s ‘Ultra Short’ tail swing. These unique machines have been specially modified by Komatsu UK’s Working Gear Division to run on rail tracks, using independent retractable drive bogies and rubber track shoes instead of steel. They are supplied by Komatsu distributor Marubeni-Komatsu Ltd.

The major advantage of this innovative design is that the PC128US Road/Rail machine has the ability to travel on and off railroad tracks, rather than just alongside them. This is enhanced by the safe operation of the tail swing with its very small radius of just 1.41m.

The combination of these design features means that the PC128US tail remains within gauge, even when the upper structure is slewed 90 degrees to the side. The machine can easily work without obstructing an adjacent line.

Komatsu UK has invested in a unique, dedicated testing facility to verify the stability and lifting performance of the PC128US “railer”. The rig is able to apply any combination of rail gradient, rail cant or rail twist to the machine, and it allows precise measurement of machines stability, ensuring that the machines are perfectly tuned for stability and performance.

PC128US



At the job site, with the push of a button, the specially equipped PC128US quickly converts to work on rail tracks. The use of rubber tracks allows it to travel in a conventional way along the rail line without disturbing the ballast or ground surface. The machine has a convex shaped cab, which gives the operator excellent visibility. Its curved sliding door provides safe and easy access, and eliminates the possibility of the door being hit by a passing train or by someone working alongside.

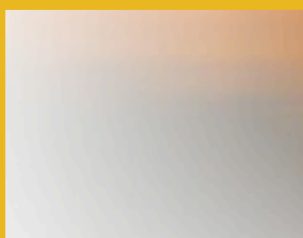
BCL Rail Services Ltd is taking delivery of the first 25 excavators, bringing their total fleet of Komatsu machines to almost 300. Commenting on the new machines, Mr Eddie O'Sullivan the Director of BCL Rail Services Ltd, said, "The PC128US machines will enable BCL to provide a cost effective and safe solution to track maintenance, whilst eliminating the disruption caused to rail users due to line closures. The PC128US is typical of the design innovation we have come to expect from Komatsu and

supported by the excellent after sales service of Marubeni-Komatsu".

This innovative machine is another example of how Komatsu and its regional Komatsu distributors work with customers to develop real solutions, tailored to their needs and suited to their unique work environments.



# In England



# [ Komatsu's Vehicle Health Monitoring System ]

— by Koji Ito —

**K**omatsu's Vehicle Health Monitoring System (VHMS) provides the means to monitor the health of the major components on large machines, enabling the remote evaluation of the machine's condition and operations. This system has been designed to reduce repair costs and maintain optimal machine availability, by helping to prevent unscheduled downtime.

Using the VHMS system, machine health information that previously took approximately one hour to be measured can now be downloaded in about ten minutes, onto a personal computer. This substantially reduces machine stop time. And in certain regions, an Orbcomm satellite

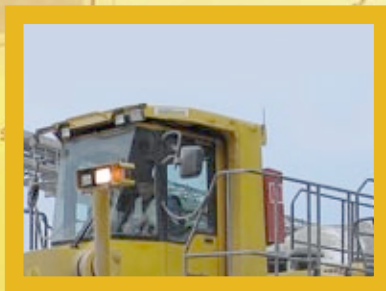
communication makes it possible for VHMS information to be transmitted without stopping the machine at all.

The Orbcomm satellite transmits all of the data down to the Orbcomm data control centre and then to the Komatsu Computer Centre. From this centre, via the Internet, the data is then sent to the Komatsu Distributor's service team for evaluation. The data transfer happens almost instantaneously

The VHMS system enables downloaded machine data to be transmitted via the Internet and reviewed by Komatsu site managers and service engineers. These reviews are made viewing user-friendly displays that interpret the data and present it in a way that

makes the evaluation process easier. Management recommendations can then be transmitted immediately to customers. These recommendations range from advice on proper driving methods, to advance maintenance planning that suits the job site's production schedule.

The VHMS reports vital information in several areas. The operating conditions of machines and their service metres can be monitored. Trends, graphically displayed as 'change-over-time', enable remedial action before breakdowns occur. Cumulative data analysis evaluates the way that a machine is being used, and operating method improvements can be recommended. A 'snapshot'



# vhms

Copyright 2001 Komatsu All rights reserved Presented by WebCARE



function analyses data from before and after an event to help resolve problems. Fault and event history codes that are displayed on the machine's monitor panel are recorded for future reference. And eventually, an optional payload metre will allow the review of payload data.

Komatsu's VHMS provides significant benefits to customers. Sudden

breakdowns are avoided by monitoring and analysing data trends over time. Needs for service, spare parts and components are easier to forecast, minimising stop time. Finding the causes of breakdowns is simplified, enabling faster repairs. And machine life is extended substantially by ensuring proper operation and maintenance.

This is another example of how Komatsu uses leading-edge technologies to help customers get the most from their machines.

— gets the most  
from machine  
operating data —



# WA200-5 & WA200PT-5

— Komatsu's new 10 tonne wheel loaders —

— by Marco Maschke —

**K**omatsu's new WA200-5 and WA200-5PT are designed to provide users with an optimal combination of performance, comfort and economy. They have a power output of 92 kW / 123 HP, an operating weight in the area of 9.500 kg, and bucket capacities that range from 1,7 to 2,4 cubic metres.

The WA200-5 is configured as a standard wheel loader, optimally outfitted for earthmoving operations. The WA200PT-5 is configured with a parallel lifting frame that's typical of an industrial loader. It's ideal for jobs such as snow clearing, lorry loading, and municipal works.

They're both standard equipped with Komatsu's renowned SpaceCab™, with amenities and operator comfort levels that have never before been

achieved in machines of this weight class. They're quiet running, with a noise level of just 70 dB(A) at the operator's ear.





## THE WINNING COMBINATION FOR EVERY MATCH



Komatsu mini excavators, the ultimate combination of technology and experience, adapt perfectly to every need. Sturdiness and excellent stability guarantee safety and reliability in all work conditions. Simplicity of operation, thanks to their sophisticated hydraulic systems, means that less-experienced operators can work with maximum efficiency.

A wide range of models and configurations, together with the possibility of fitting the machines with various attachments, make Komatsu mini excavators the best, and often the only solution for many difficult applications. Want to try one? Visit your nearest dealer!